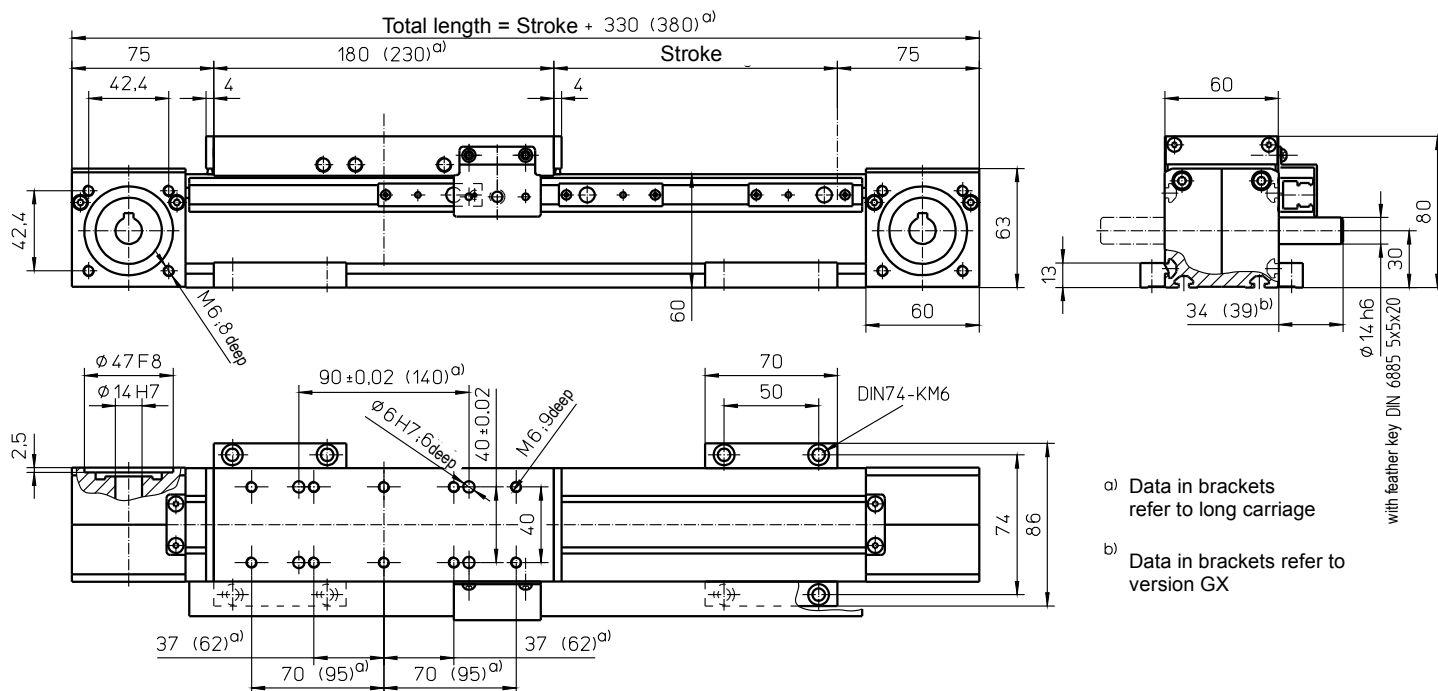


with toothed belt drive and rail guide (ZSS)



## Weights

## ZSS

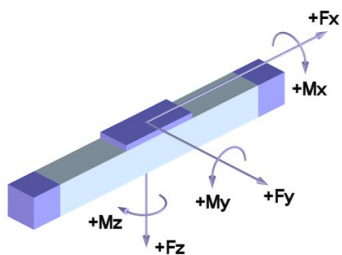
Basic length without stroke:	4.55 kg
100 mm stroke:	0.59 kg
Entire carriage 180 mm:	1.22 kg
Entire carriage 230 mm:	1.72 kg
Max. total length: (longer on request)	8000 mm

## Technical Data

## ZSS

Max. speed:	5.00 m/s
Max. acceleration:	30 m/s <sup>2</sup>
Repeat accuracy:	± 0.08 mm
Idle torque:	1.10 Nm
Moment of inertia:	2.00 • 10 <sup>-4</sup> kgm <sup>2</sup>
Drive element:	Toothed belt <b>25 AT5-E</b>
Stroke per revolution:	160 mm

## Forces and moments



Forces	Dynamic [N]
$F_x$ d)	850
$F_y$	500
$F_z$	1400
$-F_z$	800
Moments	Dynamic [Nm]
$M_x$	50
$M_y$	160 (200)
$M_z$	100 (140)

d) Maximum value (see diagram "F<sub>x</sub>-v-Diagram")  
Data in brackets refer to long carriage (230)

## F<sub>x</sub> - v - Diagram

