

# CR Phantom 6x10

## CR Phantom 6x10

according to ASTM E2445, ISO 16371-1



Smaller, simpler CR Phantom  
for Qualification of CR Systems  
Process Control and Long-Term-Stability

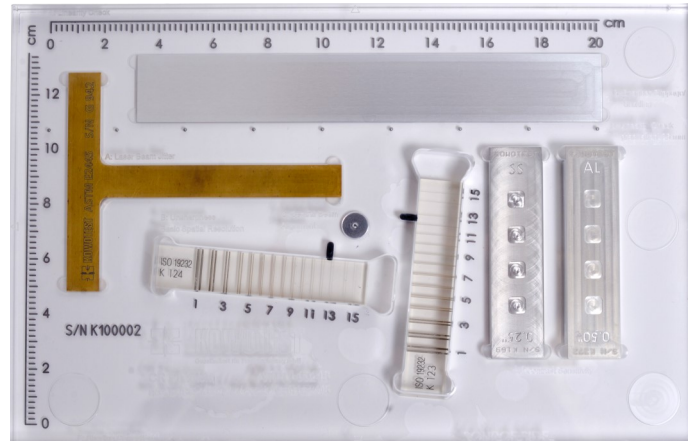
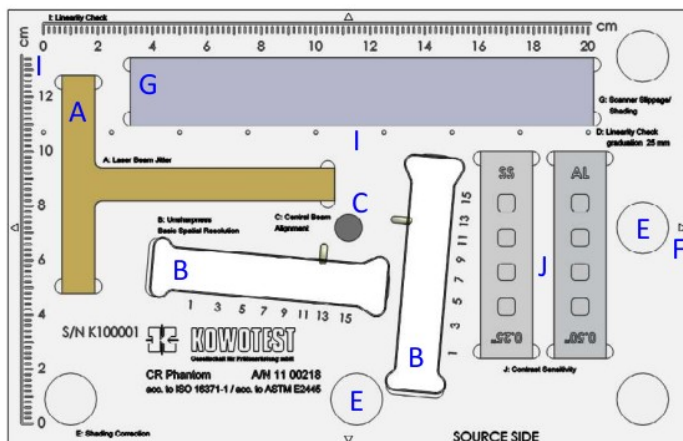
# Test Phantom for Qualification of Image Plate Scanner Systems (CR)

CR Phantom enables to test all relevant parameters of CR Scanner systems and Imaging Plates (IP) like Basic Spatial Resolution, MTF, Contrast Sensitivity, Blooming, Laser Jitter, Scanner Slippage, Shading, Erasure and more. These tests required and described in detail in standards ASTM E2445 and ISO 16371-1 have to be performed periodically for checking process control and long-term-stability.

The KOWOTEST CR Phantoms exceed these standards by including two Duplex Wire Type IQIs and measuring points for Shading in both axes - portrait and landscape. All required information is mapped on the Imaging Plate with a single X-ray exposure. Phantom must not be rotated to generate information of second axis. This results in higher accuracy and significant time savings.

CR Phantom 6x10 is designed for use of smaller Imaging Plates. Even IPs in weld formats down to 10x24 cm can be used to perform all essential tests.

For Linearity check in landscape direction additional tungsten balls in a graduation of 25 mm are available. The Duplex Wire Type IQIs can be removed to use for other applications.



## Specification:

IQI, Gauge	Test, Check	Deviation	Difference
A T-Target	Laser Jitter, MTF, PMT Non-Linearity	smaller	equal tests feasible
B Duplex Wire Type IQI	Basic Spatial Resolution, Unsharpness	optional	D13, D15, D17 to be inserted
C BAM Snail	Central Beam Alignment	no	no
D Line Pair Gauge	Resolution	missing	test preferably done with Duplex IQI
E Shading IQI	Shading	closer	equal tests feasible
F Cassette Position Locator	Position of IP	missing	none-essential
G Homogeneous Strip Target	Scanner Slippage	smaller	equal tests feasible
H Lucite Plate	Carrier Plate	smaller	equal tests feasible
I Linearity IQI - cm-/ inch Ruler	Spatial Linearity, Distortion	cm only	equal tests feasible
I Tungsten Balls, Ø 1.0 mm	Spatial Linearity, Distortion	additional	for IP width less than 15 cm (6 inch)
J Contrast Sensitivity Gauge	Contrast Sensitivity	Cu missing	none-essential, Cu not penetrated at 90 kV
Dimensions:	250 x 160 x 16,5 mm	6 x 10 x 0.65 inch	

## Scope of Supply:

CR Phantom 6x10 - Type I in wooden case  
 Duplex Wire Type IQIs not included but required (optional)  
 Test Certificates acc. to ASTM E2445, ISO 16371-1  
 Declaration of Conformity acc. to EN ISO/ IEC 17050-1/ -2

Article No.: 11 00218

## Optional - required:

Duplex Wire Type IQI acc. to ASTM E2002, ISO 13232-5 - D13  
 Duplex Wire Type IQI acc. to ASTM E2002, ISO 13232-5 - D15 HiRes

Article No.: 11 00155

Article No.: 11 00160

