

The **Canalta Dual Chamber Orifice Fitting** is a high quality, high accuracy orifice fitting manufactured in a wide selection of sizes and materials. Proven measurement principles and field repairability make the Dual Chamber Orifice Fitting a reliable, cost-effective solution to your flow measurement needs. These units are built to meet or exceed ASME and ANSI specifications, as well as to comply with the requirements of the latest editions of AGA-3 / API-14.3 and ISO-5167. Available in Flangeneck, Flange x Flange and Weldneck configurations.

No matter the application, your process will benefit from Canalta's proven reliability and you can improve your bottom line without sacrificing quality, service or performance.



Our comprehensive **Quality Management System** includes full function, hydrostatic and pneumatic pressure testing to prevent imperfect fittings from reaching service. Standard testing comes at no extra charge and includes verifiable pressurization to 150% of working pressure. Additional inspections - such as radiography, ultra sonic and liquid dye penetration - are also available.



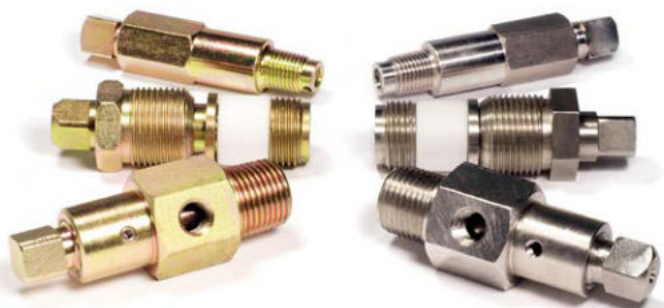
Our unit-specific **Documentation** packages include hydrostatic, seal and function test results as well as material test reports. An AGA 2000 Inspection Report is submitted with every fitting and includes bore tolerance and roughness tests, orifice eccentricity, seal protrusion, plate sealing tests and other critical details.

Third party inspection and reporting is available upon request.



Canalta applies a standard coating to all Dual Chamber Orifice Fittings that includes a non-lift oxide primer and fast-drying enamel finish in Canalta Grey and burgundy top. Custom coatings for special environments - including maritime, humid, high temperature and others - custom colours and primer only applications are also available.

## **Parts matter, whatever your service environment.**

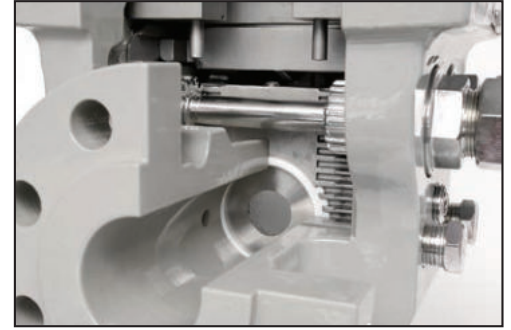
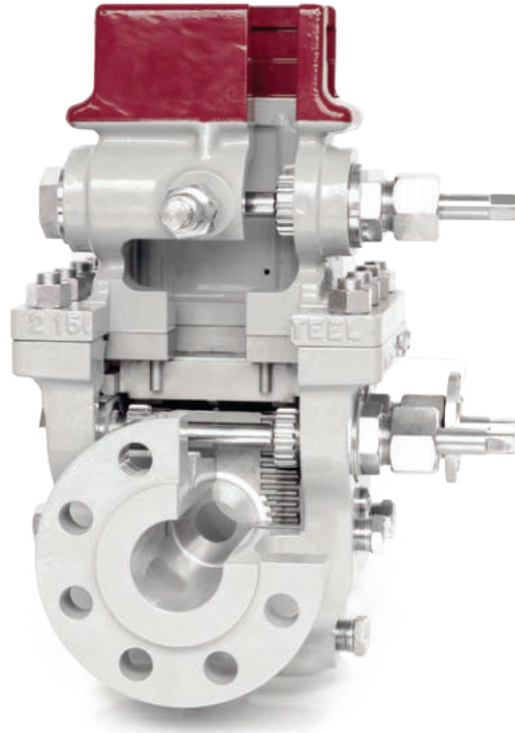


Our standard zinc-plated 4130 carbon steel internals offer superior corrosion protection and resistance to sulfide or hydrogen induced cracking, providing reliability and performance over a long service life.

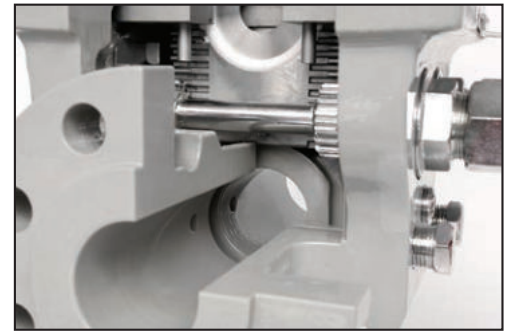
For extreme corrosive applications, such as wet H<sub>2</sub>S service, 316 stainless steel internals are available to protect against general and localized corrosion.

All parts conform to NACE MR0175 / ISO 15156:2003 specifications. Internals in Duplex SS and other exotic alloys are also available by special order.

*Delivering superior orifice fittings and exceptional value has been our core business for over fifteen years.*



*With orifice plate in flow line*

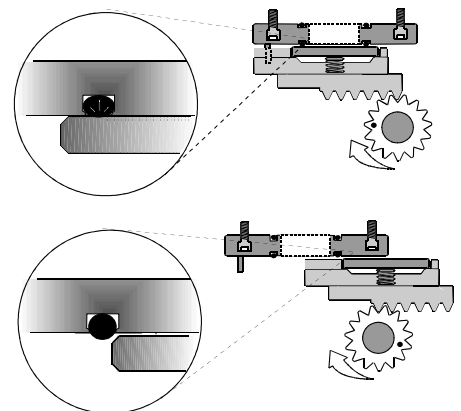


*With orifice plate out of flow line*

Each unit features **Fully Accessible, Field Adjustable Eccentricity** of the orifice plate from the exterior of the fitting. Tamper-proof sealing is done on request.

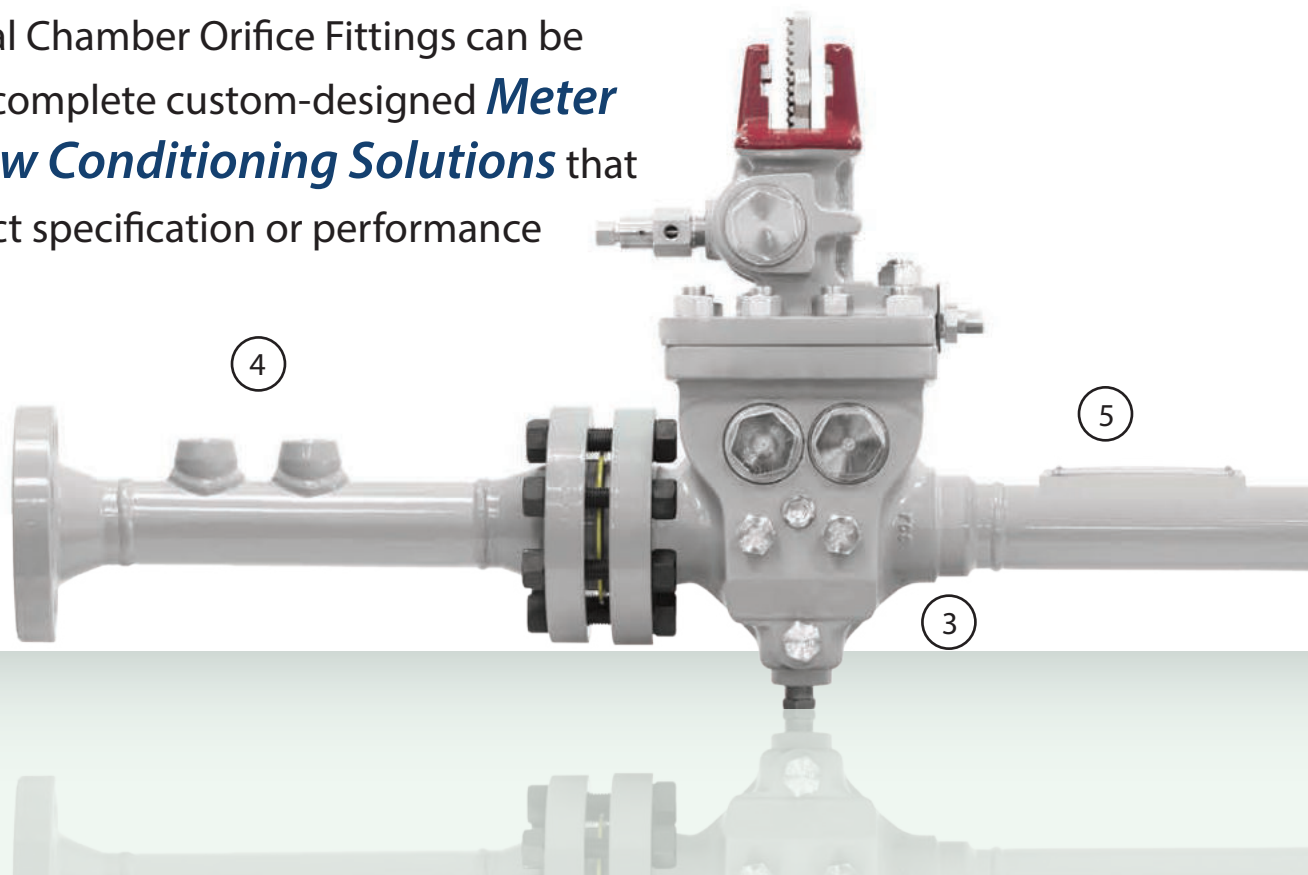
**HNBR O-ring Seals** on both the body and seal bar come standard with all Canalta Dual Chamber Orifice Fittings. This feature eliminates nuisance gasket maintenance and clamping bar screw breakage, while providing superior sealing capability. The O-rings incorporated are standard shelf sizes and can be supplied in a wide variety of compositions. Gaskets are also available and can be used when preferred or required.

The **Soft Seat Valve Seal** is available for all dual chamber models. Effective in all scenarios, but particularly suited to low pressure applications, this unique design enables a bubble-tight seal between the upper and lower chambers without the need for frequent lubrication. The specially machined seal channel helps prevent O-ring dislocation, and the O-ring seals incorporated are available in a wide variety of compositions.



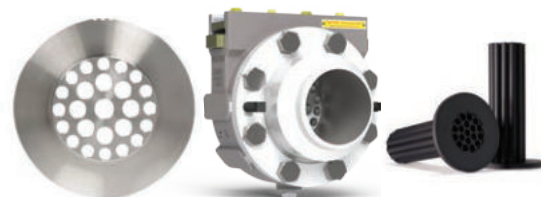
## METER RUNS

All Canalta Dual Chamber Orifice Fittings can be supplied with complete custom-designed **Meter Runs** and **Flow Conditioning Solutions** that meet your exact specification or performance needs.



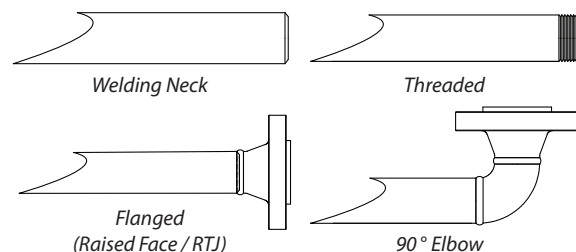
### 1 FLOW CONDITIONING ACCESSORIES

The goal of meter run design is to account for swirl and turbulence. Suitable for a wide range of flow measurement methods and equipment, Canalta's Contour™ lineup of Flow Conditioners, Flow Conditioner Housings and Straightening Vanes will help you develop the flow profile you need to achieve maximum performance and accuracy in the field.



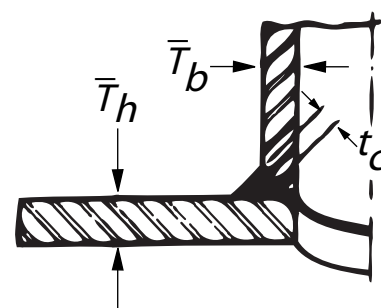
### 2 END CONNECTION OPTIONS

Canalta Meter Runs can be fabricated with a variety of standard tube ends. All inner surface welds are precision ground and inspected to meet exacting I.D. surface and roundness tolerances. Per your requirements, two and three-piece meter runs can have dissimilar end types up and downstream of the orifice fitting.



### 3 WELDING SPECIFICATION

Each Canalta Meter Run is professionally fabricated by our team of certified "B" Pressure Welders and experienced pipe finishers to meet and exceed the stringent specifications of AGA / API / ISO. Our welding procedures are registered with the Alberta Boiler and Safety Association (ABSA) and are in accordance with the applicable ASME Boiler and Pressure Vessel Codes. Canalta will ensure that all of your NDT and stress relieving requirements are met with full documentation.

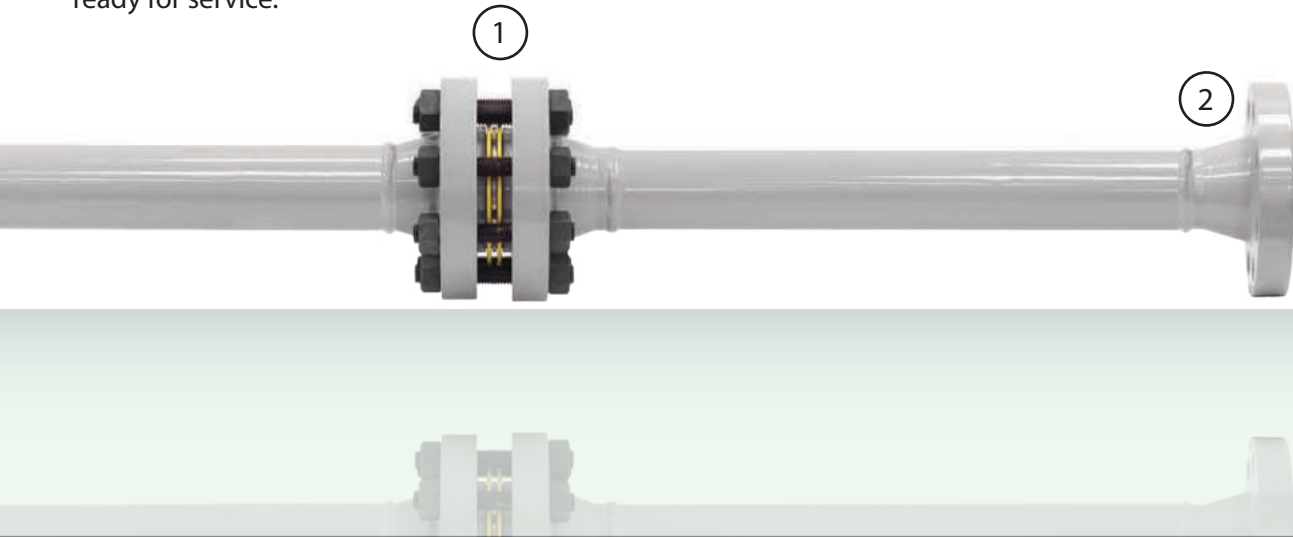




Whether the size is 2" or 30", high or low pressure, wet, dry or corrosive service, we can put together a custom meter run package that meets your specification or performance needs and perfectly matches your Canalta Orifice Fitting.

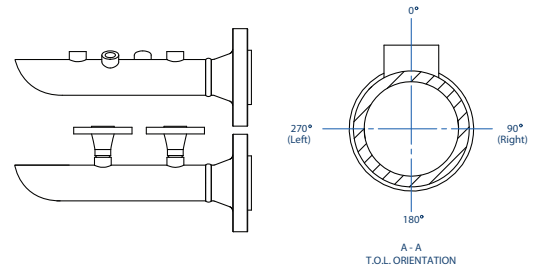
***You trust Canalta at the orifice plate. When accuracy counts, trust Canalta up and downstream, too.***

We've been working to AGA-3 / API 14.3 and ISO 5167 specifications for over fifteen years. Skilled technicians, engineers and inspectors work together to manufacture first-rate meter tubes out of pipe carefully selected and prepared with the appropriate surface requirements, roundness and I.D. tolerances. Hydrostatic test results are included as a standard. PWHT stress relief, ultra-sonic and liquid dye penetration test results are available on request. Our rigorous inspection regime and comprehensive documentation mean you can be sure your meter run is reliable, exceptionally accurate and ready for service.



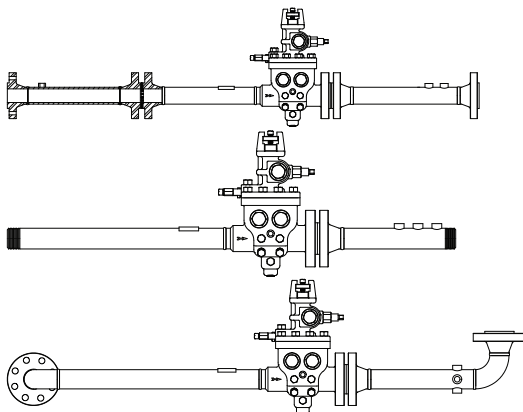
#### 4 BRANCH CONNECTION OPTIONS

Industry standard offerings provide one 1" and one 3/4" branch connection on the downstream spool. Our custom meter tube design capability allows us to fabricate nearly any combination of weldolets, sockolets, flanged outlets, threadolets and latrolets in any orientation.



#### 5 METER RUN SPECIFICATION PLATE

All Canalta Meter Runs include a specification plate mounted immediately upstream of the orifice fitting. These spec plates detail pipe schedule, pressure rating, maximum beta, maximum orifice and other information essential to proper operation.



With literally endless configurations possible, Canalta will custom design and fabricate your meter run for any application.

***ACCURACY, RELIABILITY,  
PERFORMANCE.***